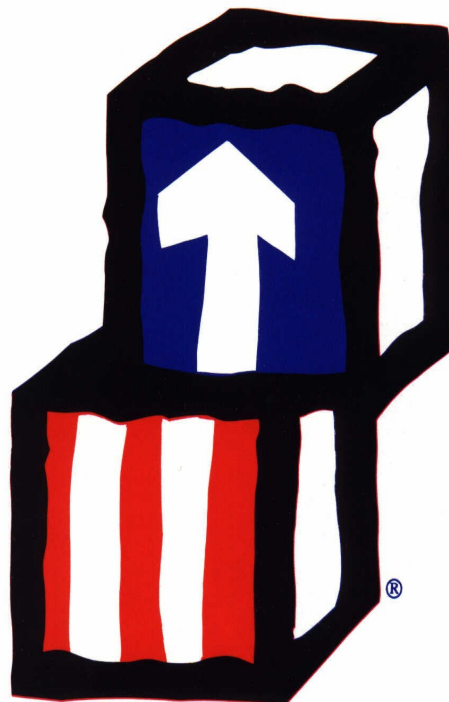




O.V.O. Head Start Program
2014 Annual Report



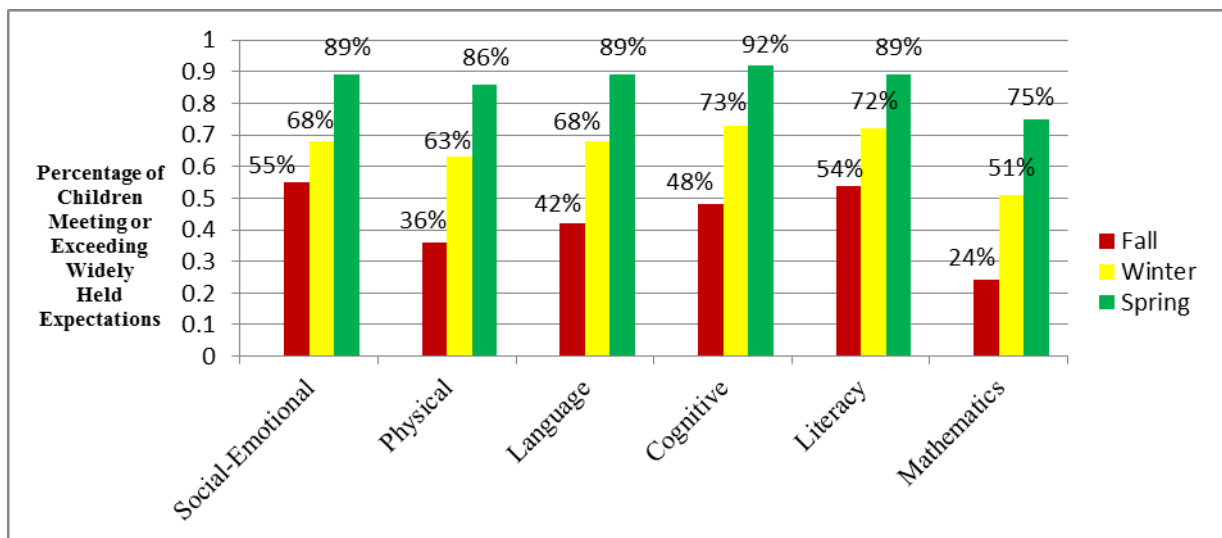
Head Start provided intensive educational, health, and family support services to 224 children and families. We operated 11 classrooms in four Centers, with two classes providing full day classes, five days per week; one class providing full day classes four days per week; and eight part day classes operating four days per week. Fifty-three children, or 24%, were diagnosed with a documented disability and received special education services. Transportation services were provided to 165 children.

Three of the four Centers operate as Licensed Child Care Centers and were active participants in the Paths to QUALITY (PTQ) Program which is administered by the Indiana Family and Social Services Administration. The Licensed Centers operated at PTQ Level 3. Our fourth Center was located at Southwestern Elementary School in Hanover.

Education

- ◆ Teaching Staff utilized the Teaching Strategies GOLD® Curriculum and Ongoing Assessment to measure children’s progress.
- ◆ Child Outcomes data was aggregated and formally analyzed three times throughout the year; the program was adjusted based on data to ensure each child maximized their learning potential.
- ◆ Parents participated in two Parent/Teacher Conferences and two Education Home Visits to develop educational goals and learn about their child’s progress in Head Start.
- ◆ 115 children transitioned to Kindergarten in May 2014.
- ◆ School Readiness Goals are developed around the 5 essential domains of the Head Start framework, parent input, and recommendations from local school systems.

**2014 Child Outcomes Data as related to Widely Held Expectations
(Includes all 3 and 4 year old children)**



Widely Held Expectations incorporate the skills, behaviors, and general knowledge that would be typical for a specific age group or grade level. These norms are utilized nationally through the Teaching Strategies GOLD® Assessment.

Health

- ◆ 98% of all children were determined to be up-to-date on a schedule of age-appropriate preventive and primary healthcare according to the Indiana EPSDT schedule for well child care.
- ◆ 16% of children were diagnosed with a chronic condition needing medical treatment; 100% of these children received treatment for such conditions.
- ◆ 100% of all children were determined to be up-to-date on all immunizations appropriate for their age.
- ◆ 90% of children received preventive dental care.
- ◆ 22% of children were diagnosed as needing dental treatment; 82% of these children received dental treatment.

Family Support Services

- ◆ 206 families were served throughout the year.
- ◆ Services most needed included Health and Parenting Education and mental health services.
- ◆ Family Fun Night events engaged families in preparing their child for kindergarten.
- ◆ 98% of families participated in the goal-setting process to strive toward self-sufficiency.
- ◆ 47% of families had at least one working parent.
- ◆ 5% of families had two working parents.

Community Support

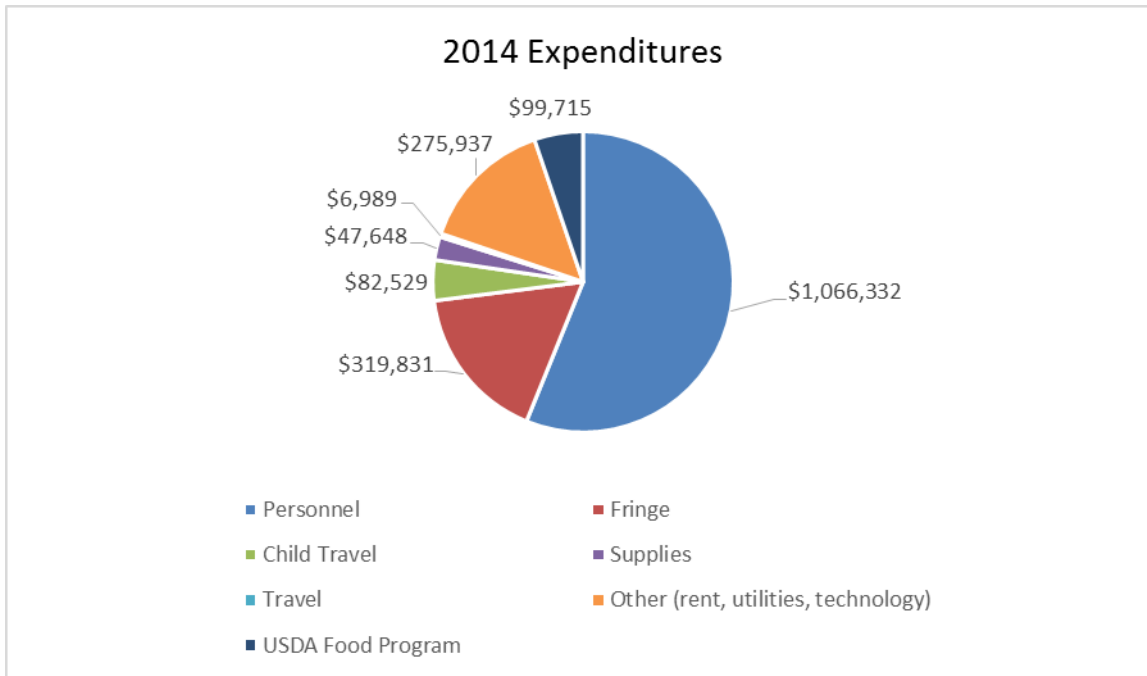
- ◆ 336 volunteers contributed to our program by giving over 6000 hours of their time.
- ◆ 82% of the volunteers were current or former Head Start Parents/Guardians.
- ◆ Our communities matched the federal Head Start grant with \$445,626 in donations, volunteer time, supplies, services, and local funds.
- ◆ The Community Foundation of Madison & Jefferson County granted \$2,000 for children's health and development at the Head Start classroom housed at Southwestern Elementary School. These funds supported Nutrition education for children and families, as well as physical development in balance, hand/eye coordination, and gross motor skills to encourage more active lifestyles.

General Information

- ◆ Average Monthly Enrollment: 100%
- ◆ Estimate of eligible children served: 46%**

(** Based on information collected from U.S. Census Bureau, 2010-2012 American Community Survey 3-Year Estimates, Table B17001)

FY 2013 Summary of Expenditures



FY 2015 Proposed Budget:

\$1,782,504 Head Start grant

109,908 USDA

+ 445,626 Contributions

\$2,338,038 Total Program Budget

Most Recent Review by Administration for Children and Families (ACF)

The FY 2013 On-site Monitoring Review identified one area of non-compliance related to 1304.40(a)(1); the grantee did not engage in a collaborative partnership-building process with parents to identify family goals, necessary services, and other supports. Upon ACF Follow up Review, the non-compliance was corrected. Based on CLASS Observations conducted during the December 2012 Federal Review, the grantee exceeded the minimum requirements for each Domain (Emotional Support – 4, Classroom Organization – 3, and Instructional Support – 2). However, the grantee fell among the lowest 10% of the Emotional Support Domain, and therefore has been determined to re-compete for funding as required in the Head Start Act of 2007. In addition, the grantee ranked among the highest 10% of Instructional Support.

Results from CLASS™ Observations – O.V.O. – Dec. 2012

DOMAIN	Score	DOMAIN	Score	DOMAIN	Score
Emotional Support	5.4231	Classroom Organization	5.4103	Instructional Support	3.3718

OHS CLASS Descriptive Statistics, 2013 National Distribution of Grantee-Level Domain Scores			
Domain	Lowest 10%	Median (50%)	Highest 10%
Emotional Support	5.5417	5.99	6.44
Classroom Organization	5.0556	5.62	6.17
Instructional Support	2.1061	2.71	3.35

OVO's Spring 2015 Internal Observation Scores

(averages of 11 classrooms):

DOMAIN	Score	DOMAIN	Score	DOMAIN	Score
Emotional Support	6.47	Classroom Organization	5.92	Instructional Support	5.56

OHS CLASS Descriptive Statistics, 2014 National Distribution of Grantee-Level Domain Scores			
Domain	Lowest 10%	Median (50%)	Highest 10%
Emotional Support	5.7167	6.08	6.50
Classroom Organization	5.3646	5.83	6.35
Instructional Support	2.2027	2.83	3.65